

KIRISUN

Version V1.9



GP700

PoC Radio

Kirisun first professional level PoC radio integrated AI noise cancellation technology, certified with IP68 rate, best-in-class audio and long lasting battery.



4G Network



Wi-Fi



Bluetooth



GPS Positioning



Emergency Alarm



Best-in-class Audio



Lasting Long Battery



Voice Recording



IP68



MIL-STD-810G

Highlights

• Purpose-Built Design

GP700 is a cutting edge PoC radio but is stylized to mimic the widely familiar aesthetics of legacy two-way radio terminals. Its large, easy to read display, ergonomic keypad with dedicated navigation keys, and ample-sized PTT button, make it extremely easy to operate even while wearing thick gloves.



• Extraordinary User Experience

Its 1.77" color LCD screen incorporates transfective display technology which allows GP700 to provide excellent readability even in bright sunlight. Our "Simple, natural, user-friendly, consistent" software design philosophy enables us to deliver an exceptional user experience.



• Best-in-Class Audio

GP700 can deliver loud and clear audio even in difficult environments. Its innovative AI based noise cancellation technologies are leveraged to optimize sonic clarity. A powerful waterproof speaker matched with an amplifying sound chamber allows the GP700 to produce loud, clear speech and outstanding overall audio quality.



• Robust and Reliable

Certified with an IP68 rating and conforming to the MIL-STD-810G standard, GP700 is built rugged to withstand water, dust, shock, extreme temperatures, and drops from up to 6ft in height. The unwavering physical durability of the GP700 is what ensures it can continue to perform as expected even in the harshest environmental conditions.



• Long-lasting Battery with Cradle Charger

The GP700 includes a 3,600mAh battery that provides sufficient power to last an entire shift on a single charge. For added convenience, a cradle-style charger is also included with each unit.



• Multiple Alarm Modes Ensure Personnel Safety

Multiple alarm modes are built into GP700 to help keep personnel safe. Users can count on immediate SOS alerts being sent out to supervisors and/or dispatchers when alarm conditions are met. One-key panic button, G-sensor backed man-down detection, and check-in based lone worker functionality allow for instant notification of emergency situations.



Features

Multiple Modes of PTT Call

GP700's PTT function can be used to initiate an Individual Call, Group Call, Call All, or Broadcast Call. These modes can be easily selected and utilized to meet the unique, immediate communication needs of various common applications.

Real Time Positioning

GP700 provides highly accurate, real-time GPS location by combining GPS, GLONASS, and BDS hardware with innovative assisted positioning algorithms.

Intelligent Patrol

GP700 supports intelligent patrol route verification. Patrol workers use a simple checkbox system in the GP700's menu to report check-in, location is then verified using real-time GPS and/or Bluetooth positioning.

Dispatcher Remote Control Support

GP700 has built-in features to allow dispatchers to perform certain actions remotely such as stunning, enabling, or disabling of individual terminals. Geo-fencing and physical track playback of terminals are also available at the dispatcher interface.

Emergency Alarm

GP700 can send instant SOS notifications in the case of an emergency. Emergency alarms can be initiated by a long-press of the panic button, as well as triggered automatically by its man-down or lone-worker alarm features.

Certifications



IP68 Certificate



MIL-STD-810G Certificate



CE Certificate



FCC Certificate



IC Certificate

Applicable Industry



Traffic Police



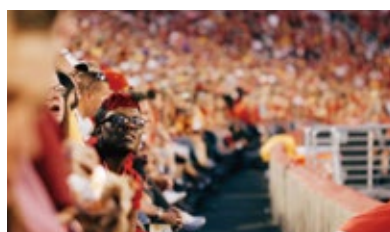
Judiciary



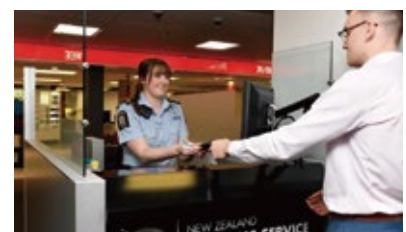
Public Safety



Airport



Major Event



Customs

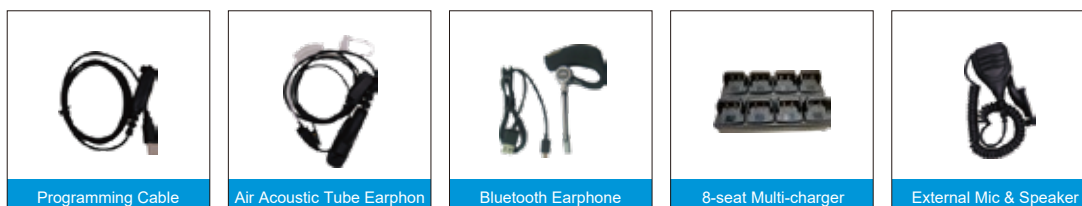
Specifications

Band A	IndiaVersion: LTE FDD: B1/B3/B5/B8, LTE TDD: B38/B39/B40/B41 TD-SCDMA: B34/B39, EVDO/CDMA: BC0, WCDMA: B1/B8 GSM: 900/1800MHz
Band B	Europe/Middle East/Africa/South Korea/Thailand Version: LTE FDD: B1/B3/B5/B7/B8/B20, LTE TDD: B38/B40/B41 WCDMA: B1/B5/B8 GSM: 850/900/1800/1900MHz
Band C	North America Version: LTE FDD: B2/B4/B5/B7/B12/B13/B25/B26, WCDMA: B1/B2/B4/B5/B8 GSM: 850/1900MHz
Display	1.77 inch transfective LCD color screen, 128*160 pixels
Memory	RAM 1GB+ ROM 8GB
Battery Capacity	3600 mAh Li-ion battery
Loud Speaker	Φ40 mm, IPX7 Waterproof rating, rated power: 1 watt, Max. power: 2 watts
Dimension of radio	120*54*37 mm
Weight	330g with battery and antenna
Waterproof Rating	IP68
Military Standard	MIL-STD-810G
Certification	IC / FCC / CE
Operating Temperature	-30°C~+60°C
Storage Temperature	-40°C~+85°C

Standard Accessories



Optional Accessories



Kirisun Communication Co.,Ltd.

3rd Floor, Building A, Tongfang Information Harbour, No. 11 Langshan Road, Nanshan District, Shenzhen 518057, P.R. China

Tel: +86-755-86106898 | Email: marketing.os@kirisun.com | www.kirisun.com